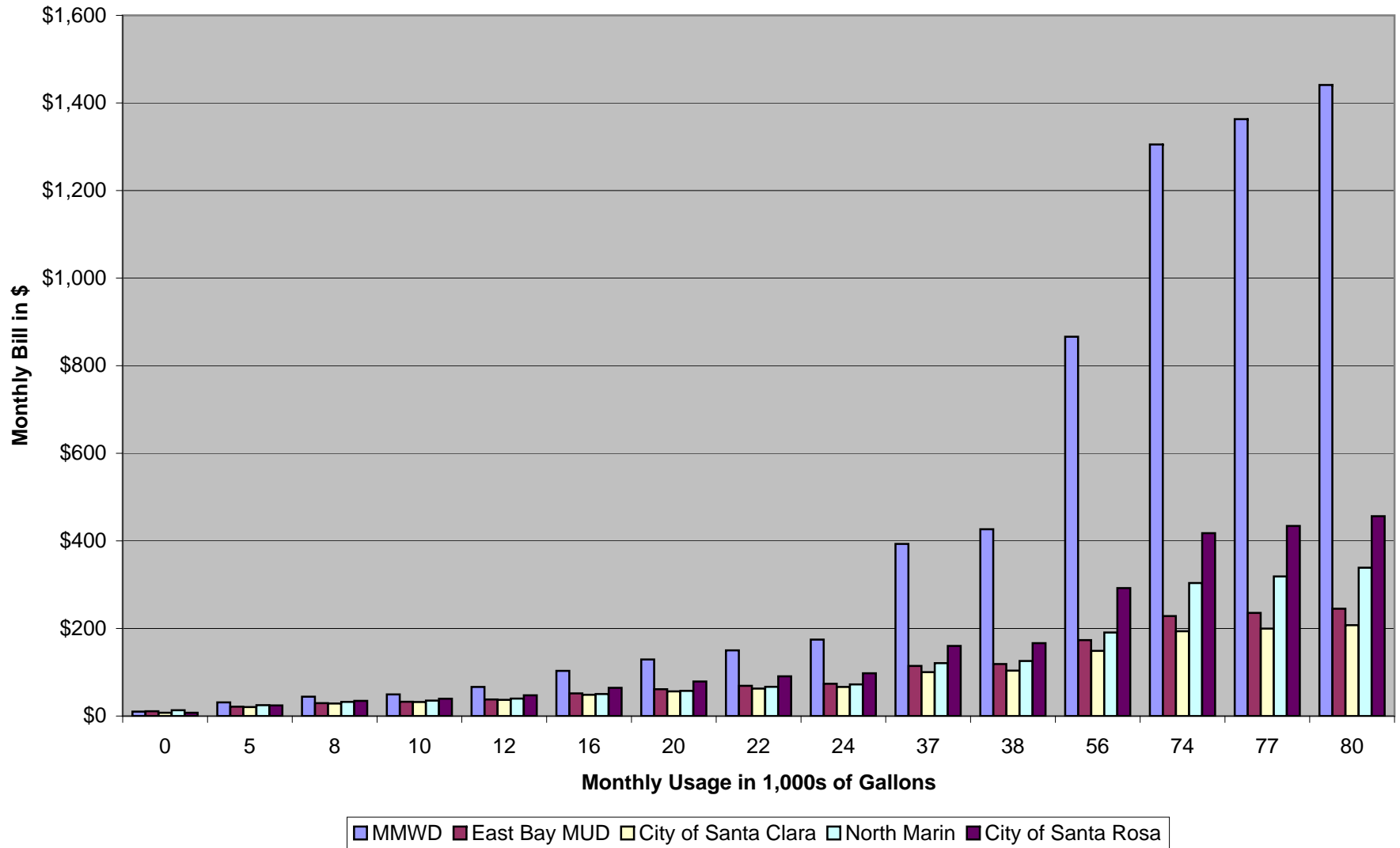


## Comparison of Estimated Water Bills by Agency



**Single-Family Residential Customers**

**MMWD**

¾” Residential Line - \$10.04

		<i>Winter</i>	<i>Summer</i>
	<i>Rate</i>	<i>(Dec-May)</i>	<i>(June-Nov)</i>
<i>Tier</i>	<i>per CCF*</i>	<i>CCF</i>	<i>CCF</i>
1	\$3.04	0-21	0-26
2	\$6.08	22-48	27-59
3	\$12.16	49-80	60-99
4	\$18.24	81+	100+

**Rates for Single Family Residential Accounts (per 100 cubic feet)**

**Total Charge**

**East Bay MUD**

¾” Residential Line - \$11.08

First 172 gallons per day	\$2.00
173 gpd up to 393 gpd	\$2.48
All water used in excess of 393 gpd	\$3.04

**City of Santa Clara**

Rate Per 100 cubic feet

¾” Residential Line - \$7.65

One flat rate	\$2.50
---------------	--------

**North Marin Water Rates**

Residential Rate for Each 1,000 Gallons Per Dwelling Unit

¾” Residential Line - \$13.20

**133 Cu Ft. Equals 1,000 Gallons**

First 615 gallons per day (gpd)	\$3.02
616-1,845 gpd	\$4.81
Use in excess of 1,845 gpd	\$8.36

First 615 gpd	\$2.27
615-1,845	\$3.61
>1,845	\$6.28

**City of Santa Rosa**  
 User Charge (\$ per 1,000 gallons)\*  
 Meters Read On and After January 1, 2011  
 5/8" Residential Line - \$7.52\*\*

Tier 1: (Up to the account's sewer cap)	\$4.30
Tier 2: Next 8,000 Gallons	\$4.95
Tier 3: Next 22,000 Gallons	\$6.18
Tier 4: Above	\$9.27

\*Rates are adjusted for increases and decreases in wholesale charges for water established by the Sonoma County Water Agency.

\*\*Connection charges are listed for either 5/8" or 1" lines.

Tier 1: (Up to the account's sewer cap)*** Est. 8,400	\$3.23
Tier 2: Next 8,000 Gallons	\$3.72
Tier 3: Next 22,000 Gallons	\$4.64
Tier 4: Above	\$6.97

\*\*\* EPA estimates a family of four would use 280 gallons per day for indoor use.