

DATA SHEET

VERTAL® 77

DESCRIPTION & APPLICATIONS

Luzenac's Vertal® 77 is a highly lamellar talc/carbonate mineral pigment that provides a unique balance of prime pigment spacing (opacity), film reinforcement, anti-cracking and barrier properties to architectural and decorative coatings.

Vertal® 77 is especially suited for latex universal primers, stain-blocking primers, sealers and undercoaters where a higher brightness mineral pigment is required.

TYPICAL PROPERTIES

Brightness, "Y"*	77
100 Mesh, % retained	trace
325 Mesh, % passing*	99.7
Oil Absorption, g oil/100g talc	30
Specific Gravity	2.8
Average Moisture, wt%*	<0.5
pH, 10% Slurry	9.5
Loose Bulk Density, lbs/ft ³ *	30

MINERAL ANALYSIS

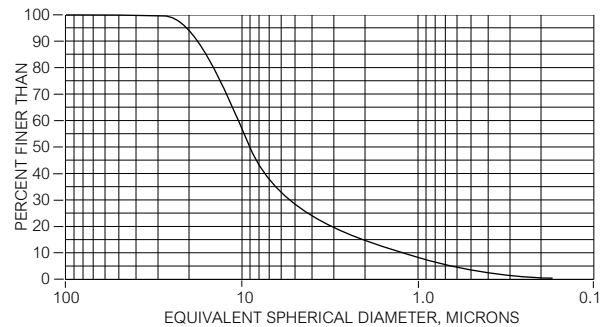
(By X-Ray Diffraction)

Talc, %	55-65
Carbonates, %	35-40
Chlorite, %	1-4

PARTICLE SIZE DISTRIBUTION

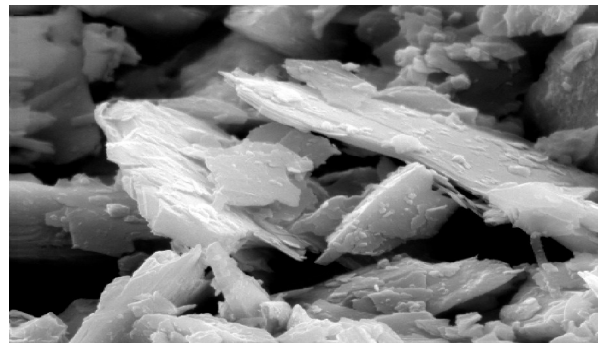
(By Sedigraph)

Median Diameter: 9 microns



MICROGRAPH

(By Scanning Electron Microscopy)



NOTICE: Although the data listed are typical, they are not production specifications. Data listed are certified only for items marked with *. To obtain exact production specifications, contact Luzenac America, Inc. The data presented are based upon tests that Luzenac America, Inc. believes to be reliable and are offered in good faith as typical of normal production, but Luzenac America, Inc. makes no warranty or representation of any kind, express or implied, regarding the information given or the product described, including any warranty of suitability for a particular purpose.

Luzenac America, Inc.

345 Inverness Drive South
Suite 310
Centennial, CO 80112 USA
800-325-0299
303-643-0400
Fax: 303-643-0446
www.luzenac.com

Technical Information

877-767-5037
techcenter@luzenac.com

Sales & Customer Service

- United States •
800-525-TALC (8252)
Fax: 406-285-5224
talc@luzenac.com
- Canada •
800-668-TALC (8252)
Fax: 905-842-9194
canada@luzenac.com
- International •
303-643-0478
Fax: 720-895-9261
export@luzenac.com

Luzenac Europe

B.P. 1162
31036 Toulouse Cedex 1, France
+33 5 61 50 20 20
Fax: +33 5 61 50 20 00
communication@luzenac.com

Luzenac Asia

3 International Business Park
#01-18, Nordic European Centre
Singapore 609927
+65 6890 6926
Fax: +65 6890 6927

Luzenac Sierra

Avenida Central No. 126
Fracc. Industrial Esfuerzo Nacional
Xalostoc, Edo. de Mexico
C.P. 55320 Mexico
(52-55) 55699614
Fax: (52-55) 55699238